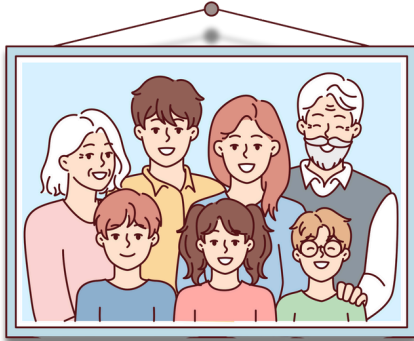


FAMILY



fuällke
family



äddne, tjidtje
mother



áhttje
dad, father

áhkátj
wife

báddnje
husband



ähtjitja
father and his child



mánná
child



ábbá
sister



vállja
brother

ádjov
grandchild

näjida
girl

bárrdne
son, boy



áddjá

grandfather,
older male family member,
old man



áhkká

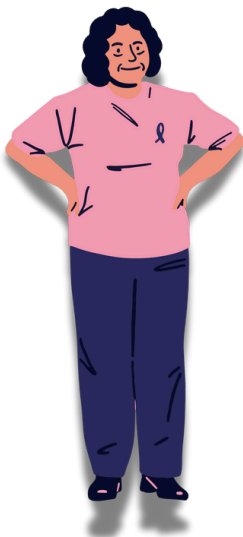
grandmother,
closely related older female
family members;
goddess

áhtjáddjá

grandfather (dad's dad)

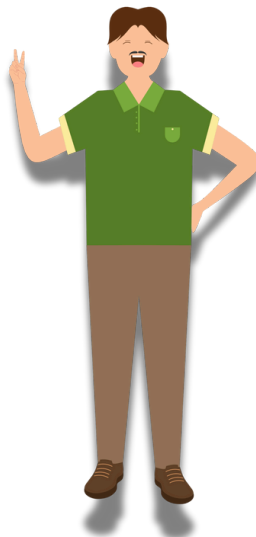
áhtjáhkká

grandmother (dad's mom)



mávvrå

aunt



tjiehtse

uncle – father's side



jumitj jumitja

twin twins

more family words

siessá	paternal aunt
muossá	maternal aunt (younger than mother)
gåsske	maternal aunt (older than mother)
tjiehtse	paternal uncle (younger than father)
iehke	paternal uncle (older than father)
iddnu	maternal uncle

